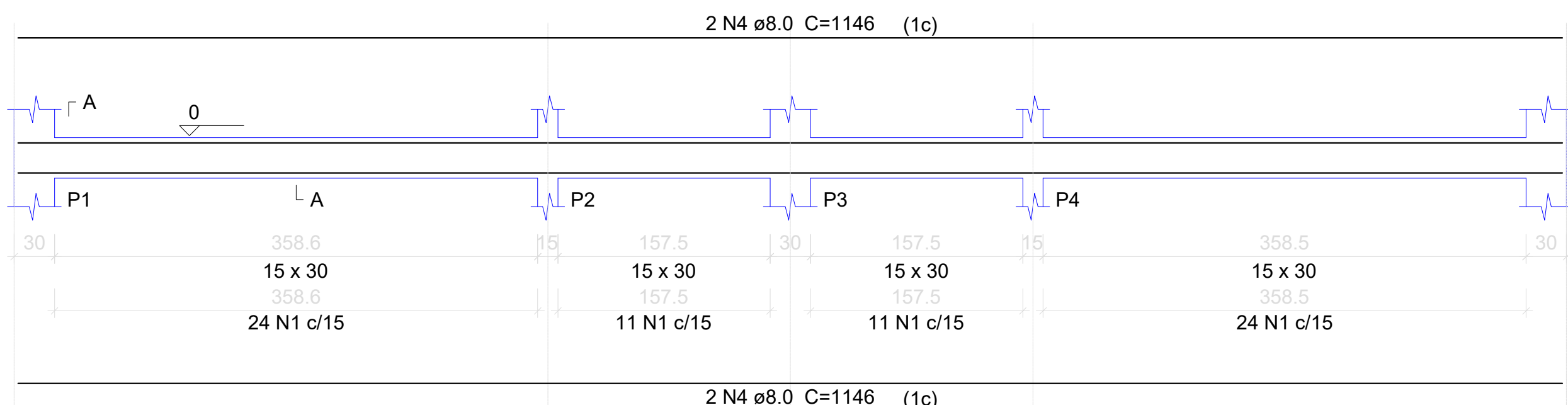
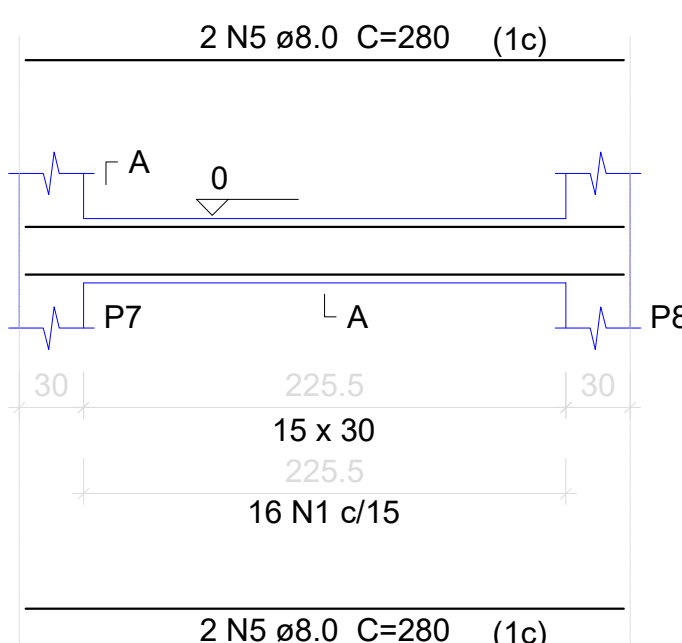


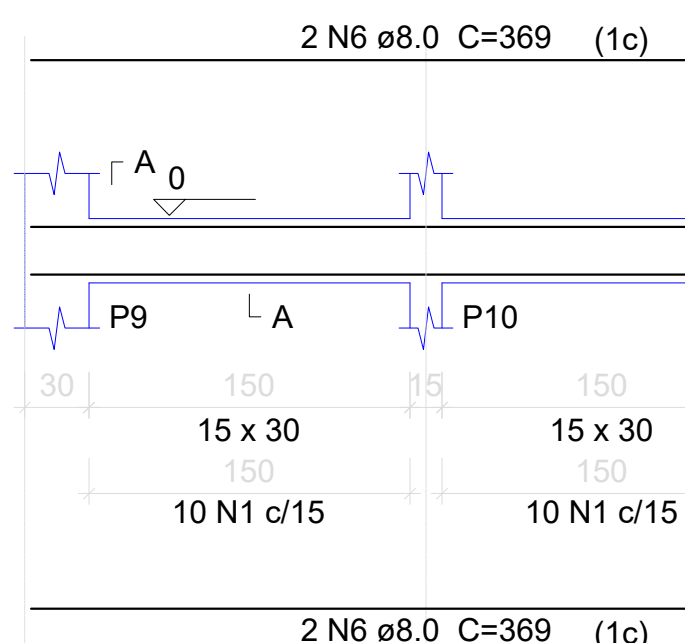
V1  
ESC 1:50



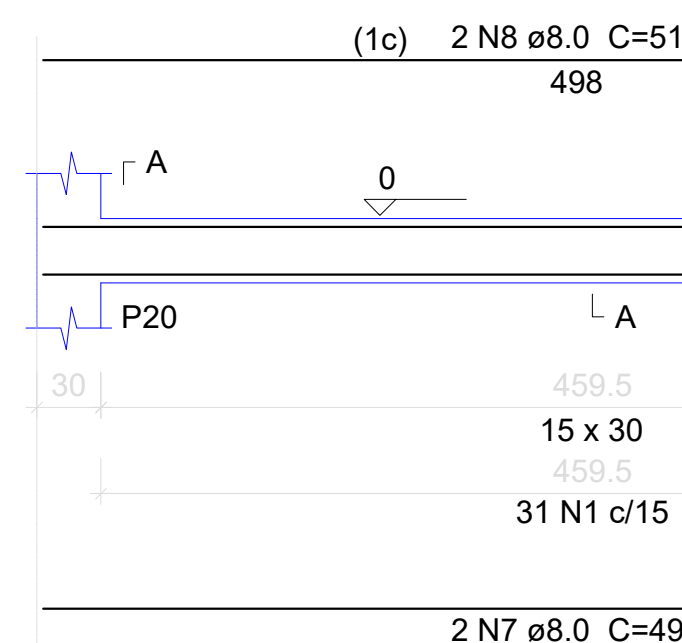
V2  
ESC 1:50



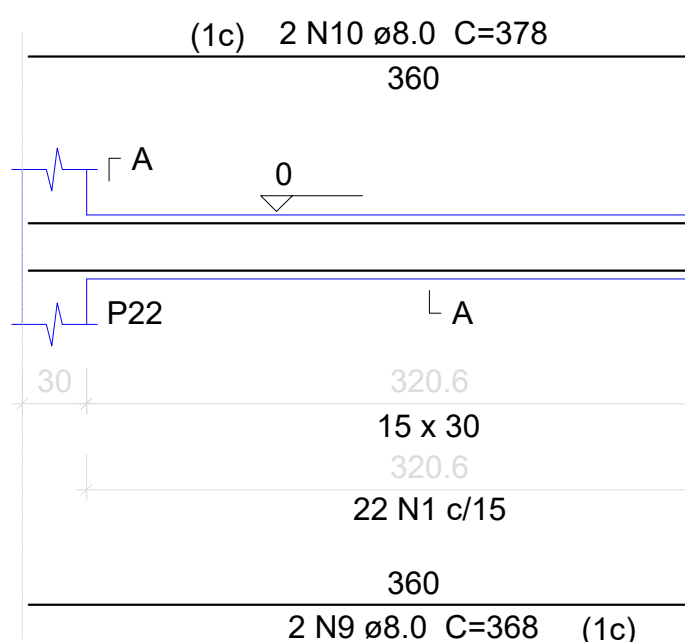
V3  
ESC 1:50



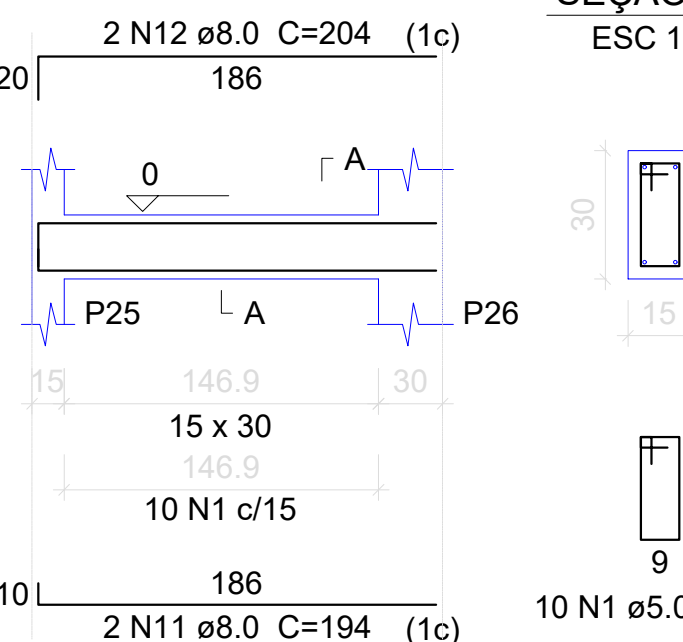
V4  
ESC 1:50



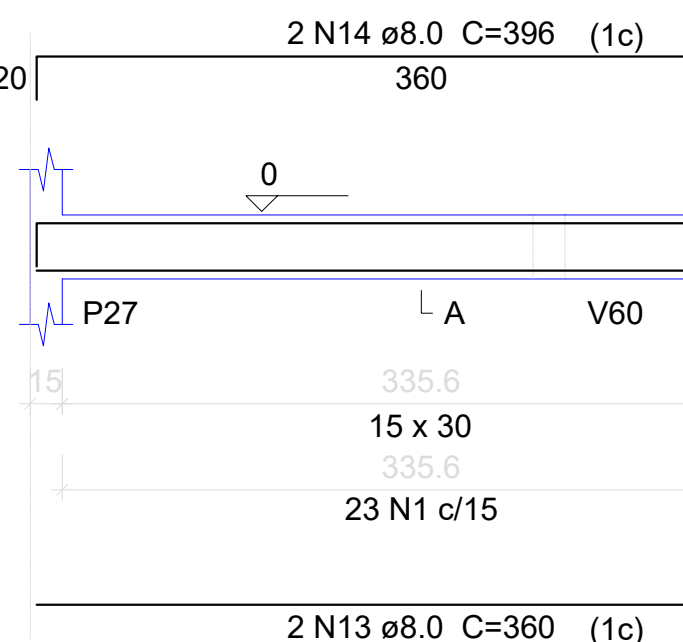
V5  
ESC 1:50



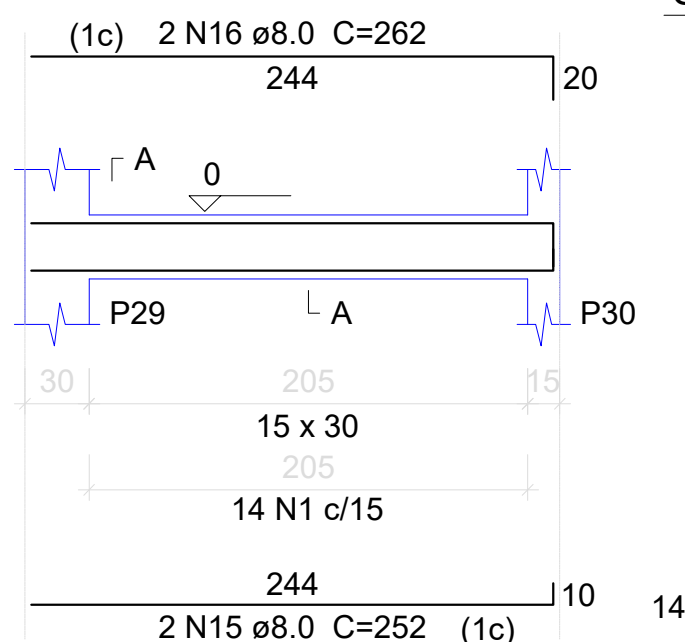
V6  
ESC 1:50



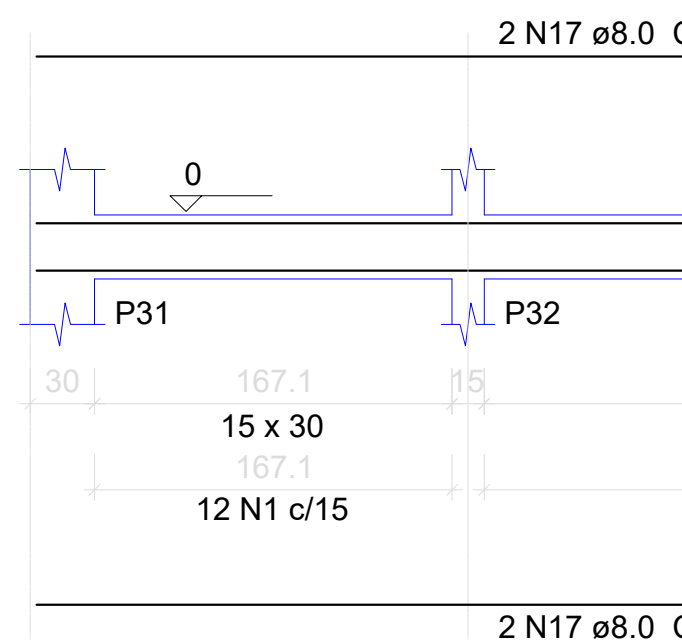
V7  
ESC 1:50



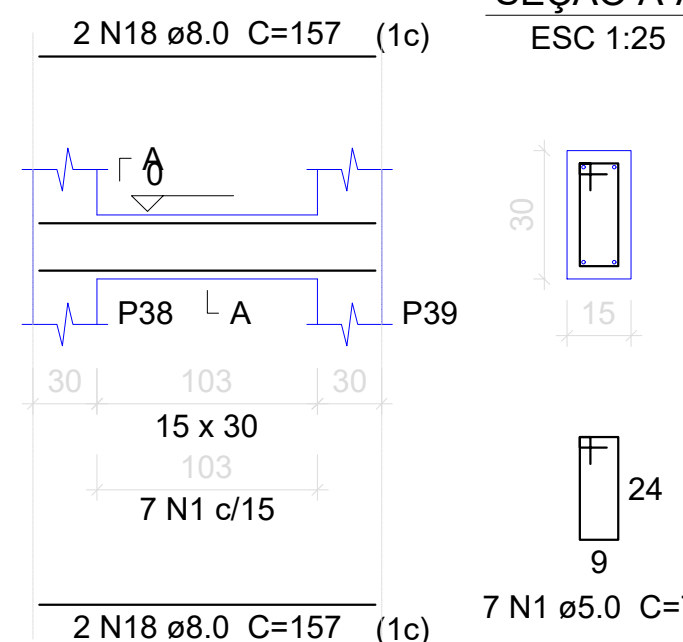
V8  
ESC 1:50



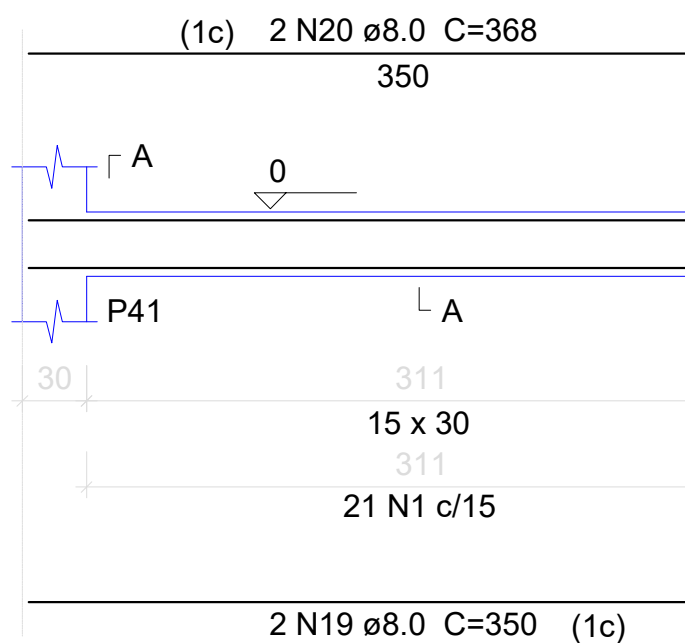
V9  
ESC 1:50



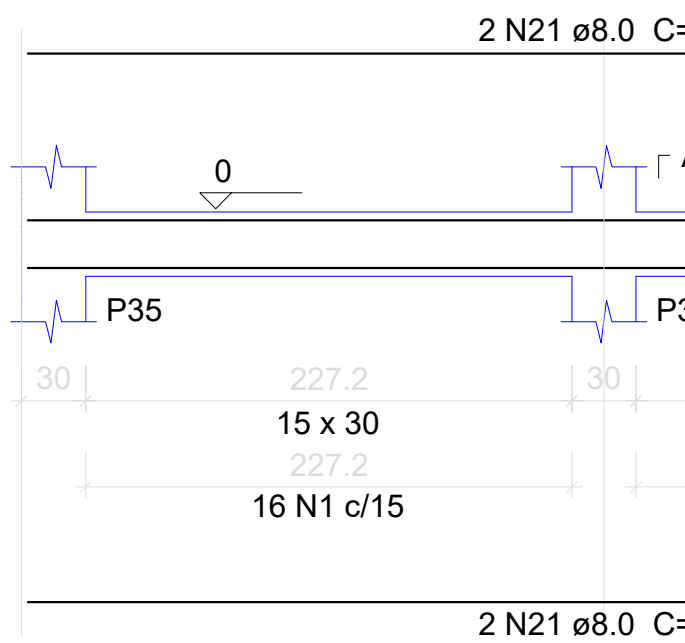
V10  
ESC 1:50



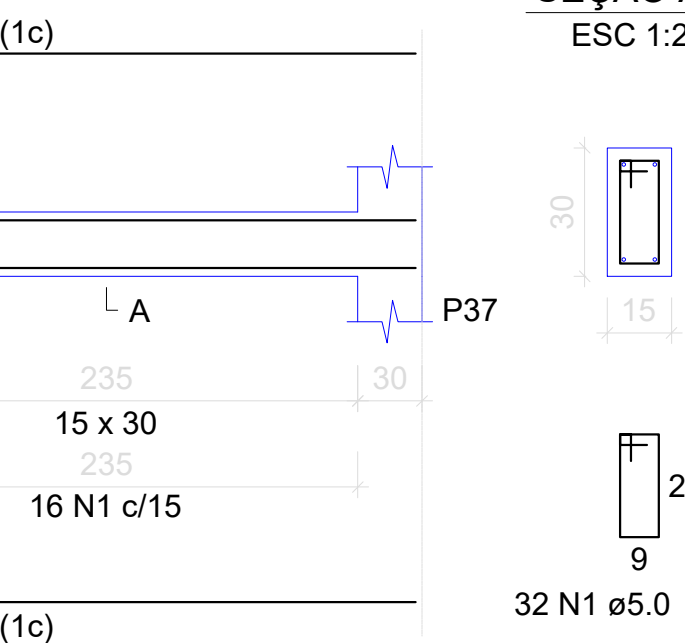
V11  
ESC 1:50



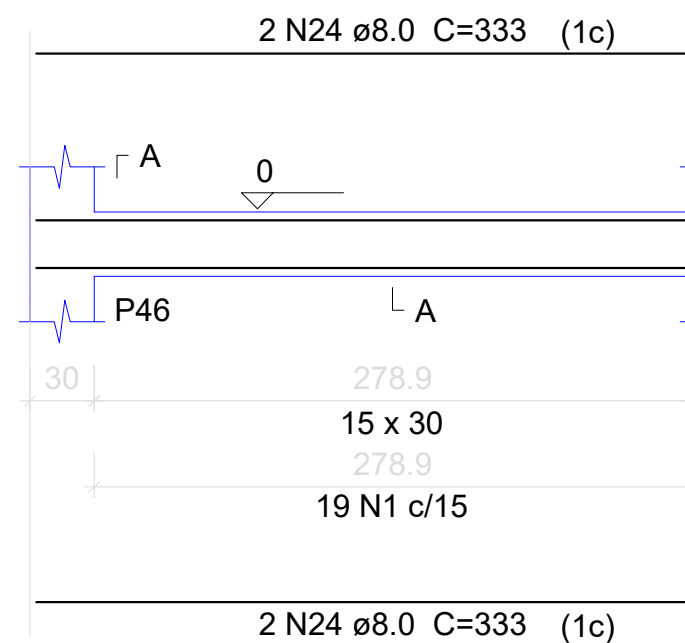
V12  
ESC 1:50



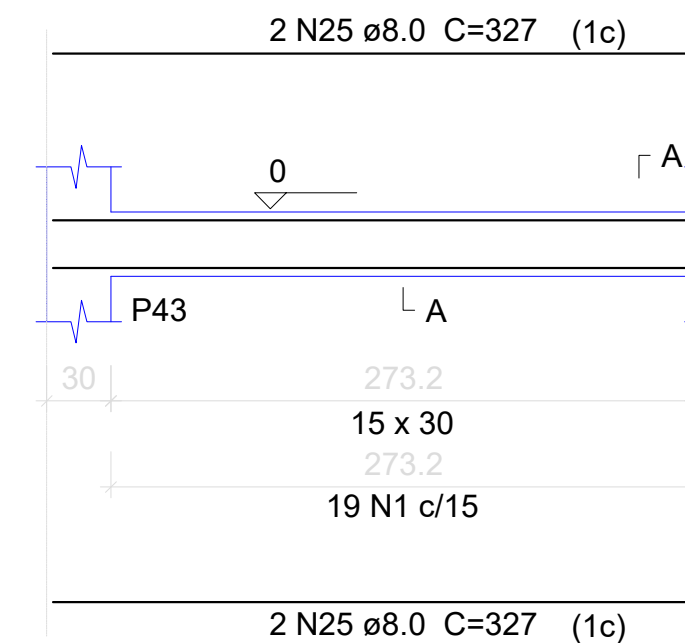
V13  
ESC 1:50



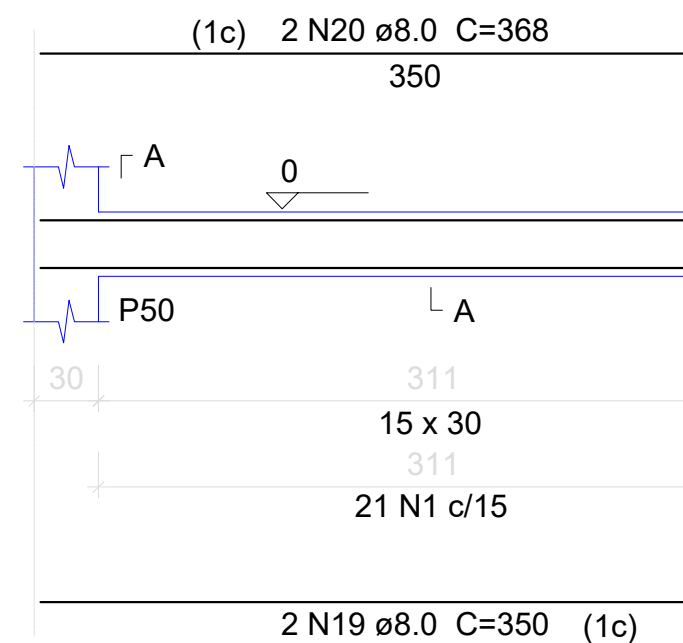
V14  
ESC 1:50



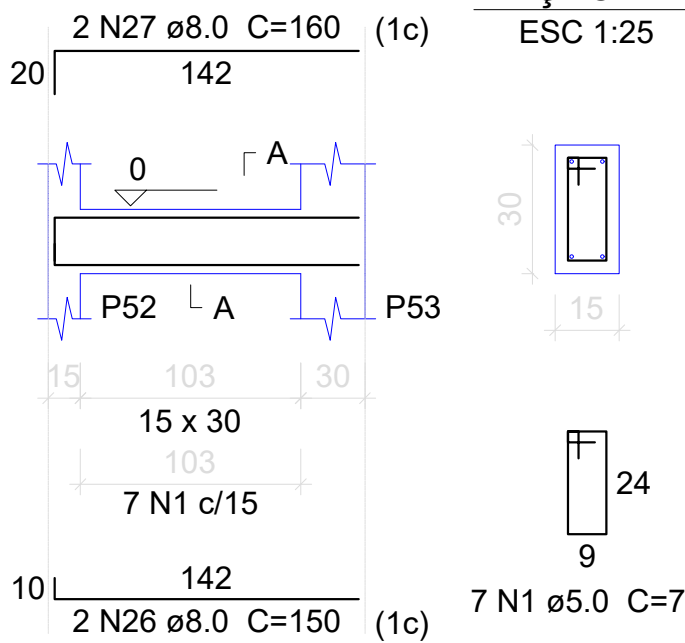
V15  
ESC 1:50



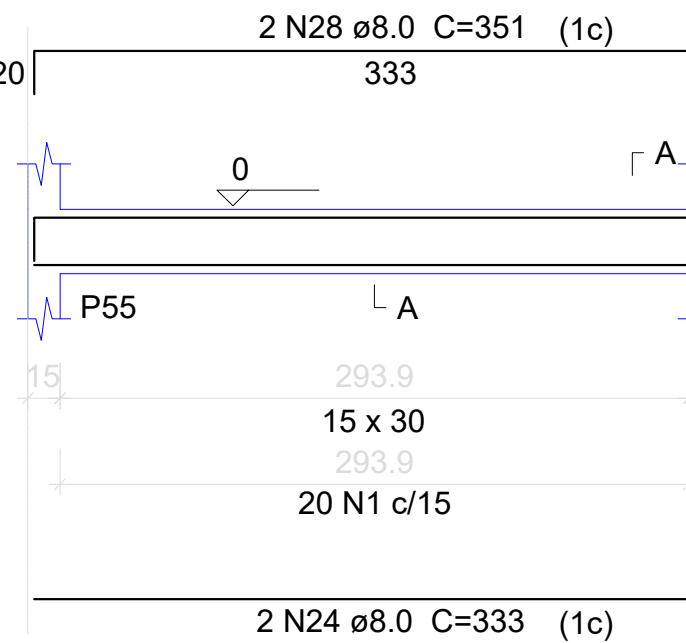
V16  
ESC 1:50



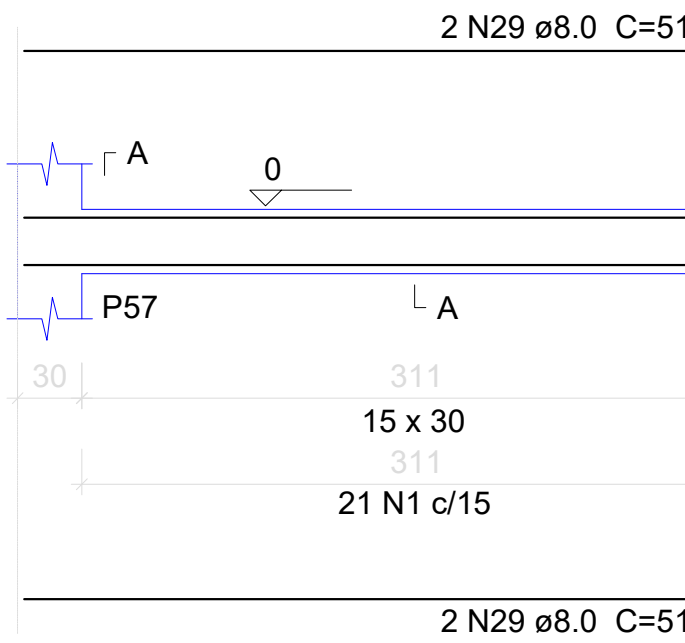
V17  
ESC 1:50



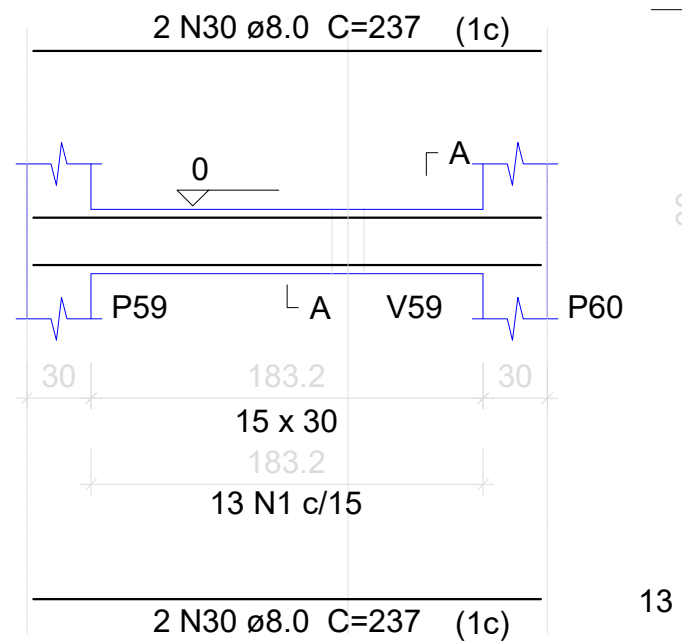
V18  
ESC 1:50



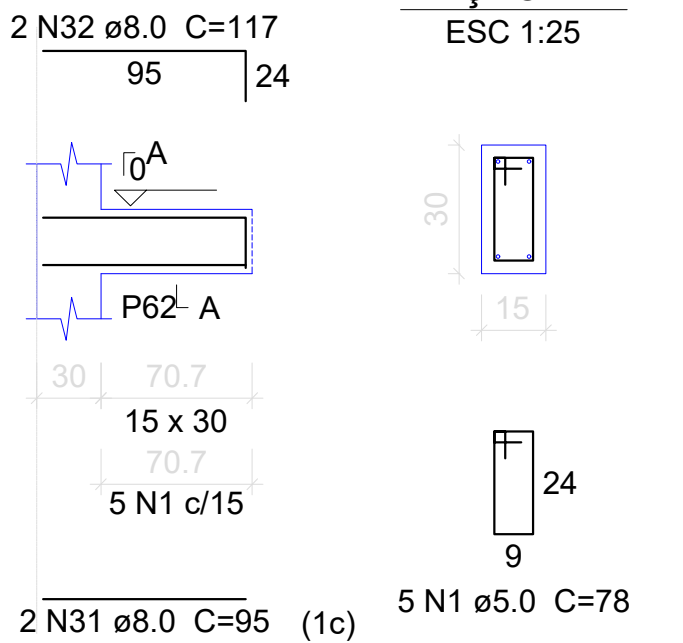
V19  
ESC 1:50



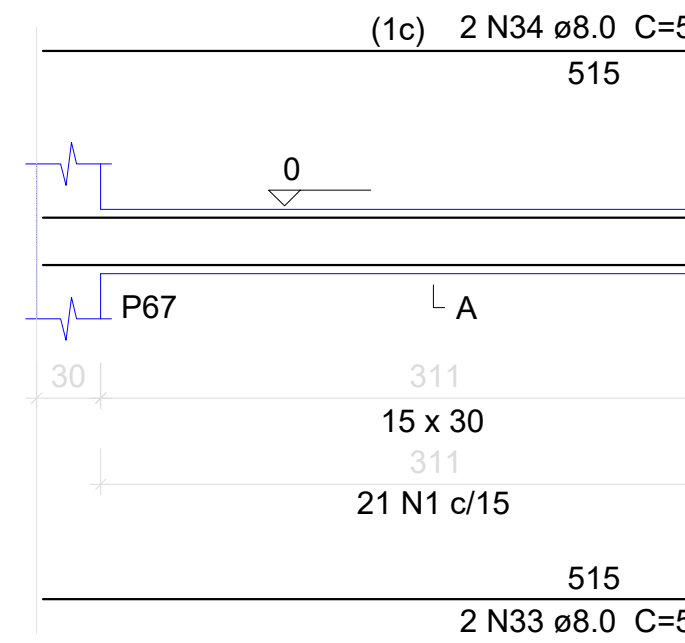
V20  
ESC 1:50



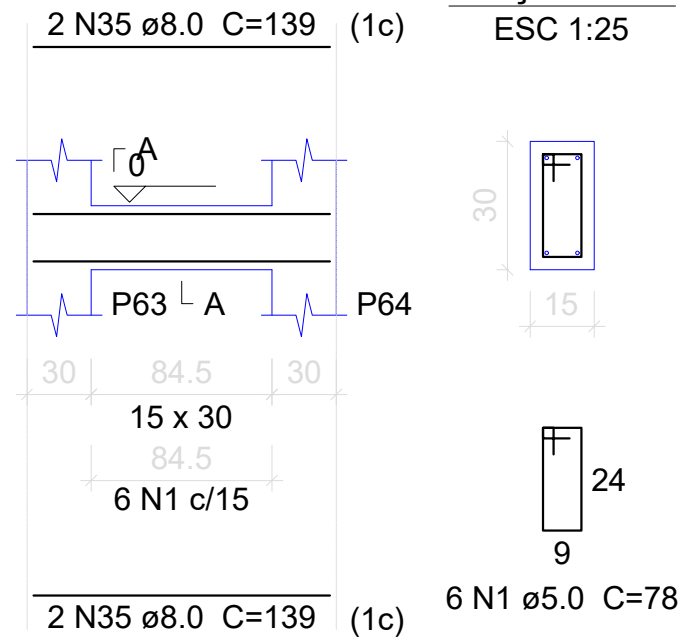
V21  
ESC 1:50



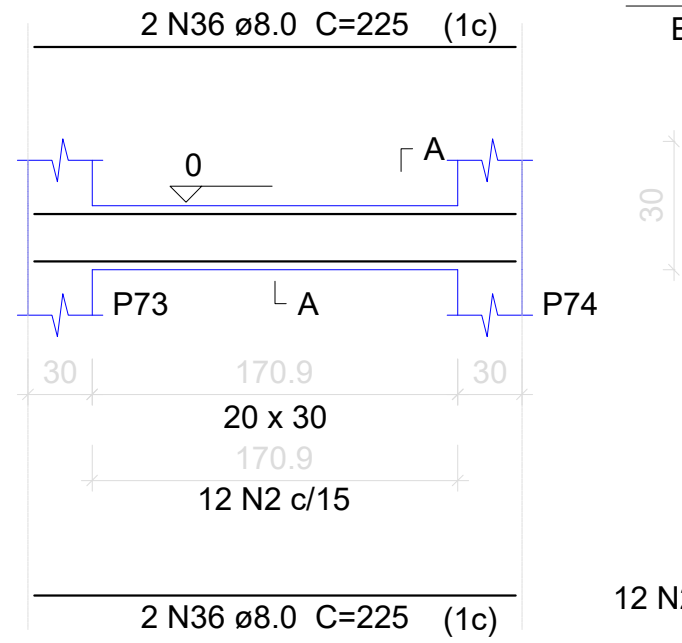
V22  
ESC 1:50



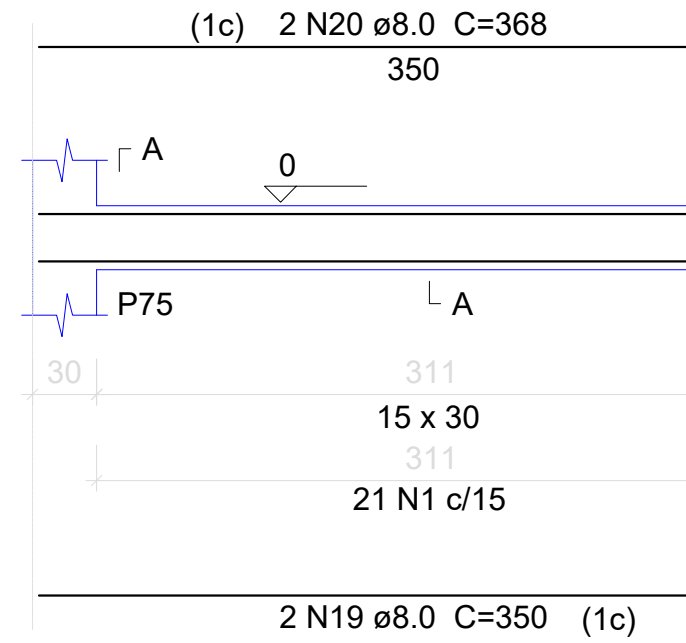
V23  
ESC 1:50



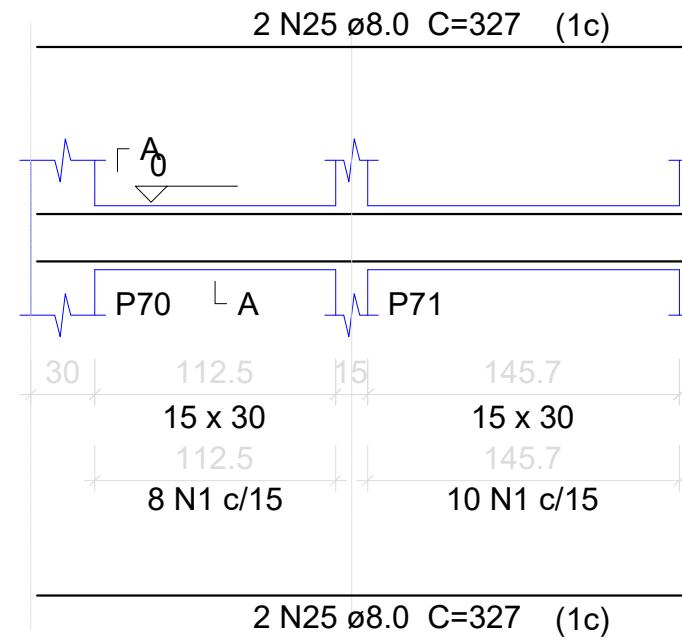
V24  
ESC 1:50



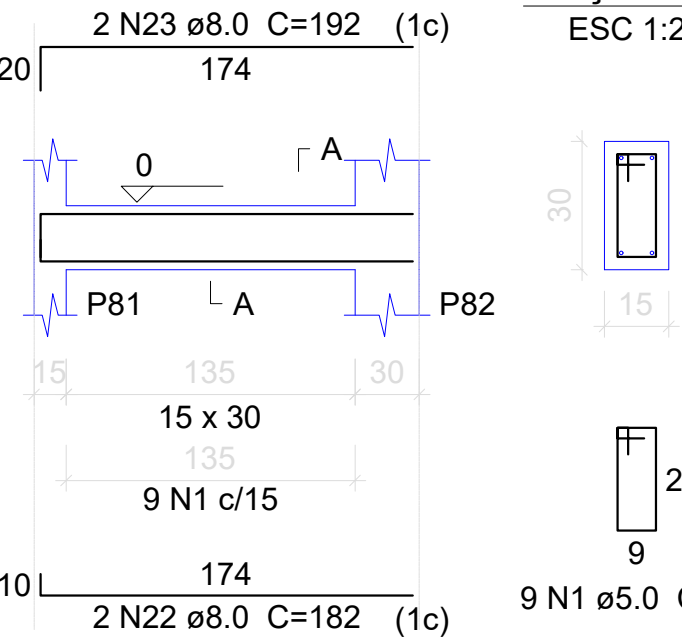
V25  
ESC 1:50



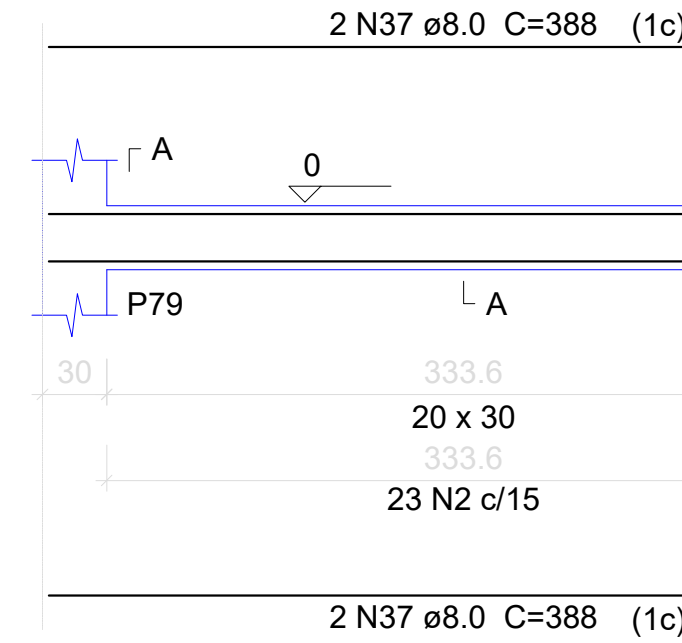
V26  
ESC 1:50



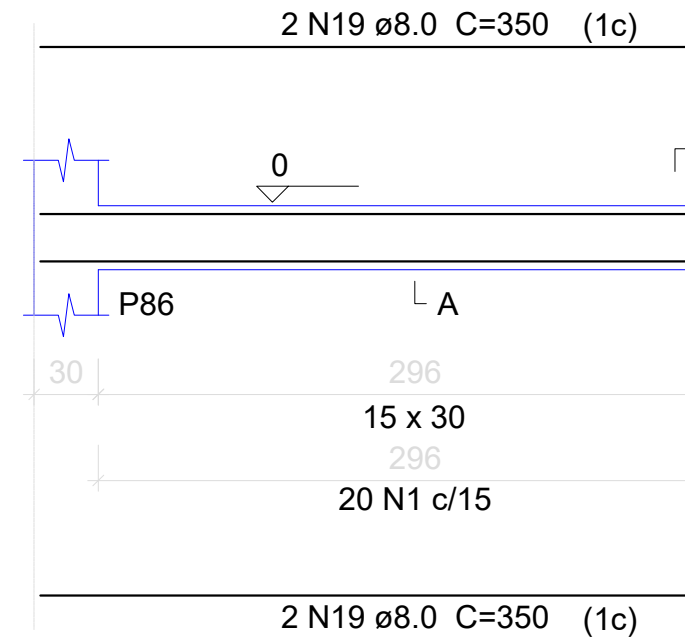
V27  
ESC 1:50



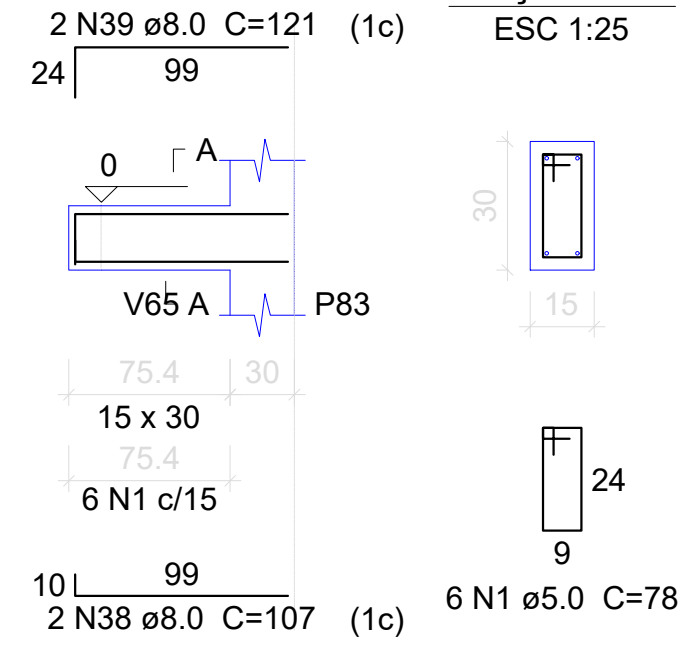
V28  
ESC 1:50



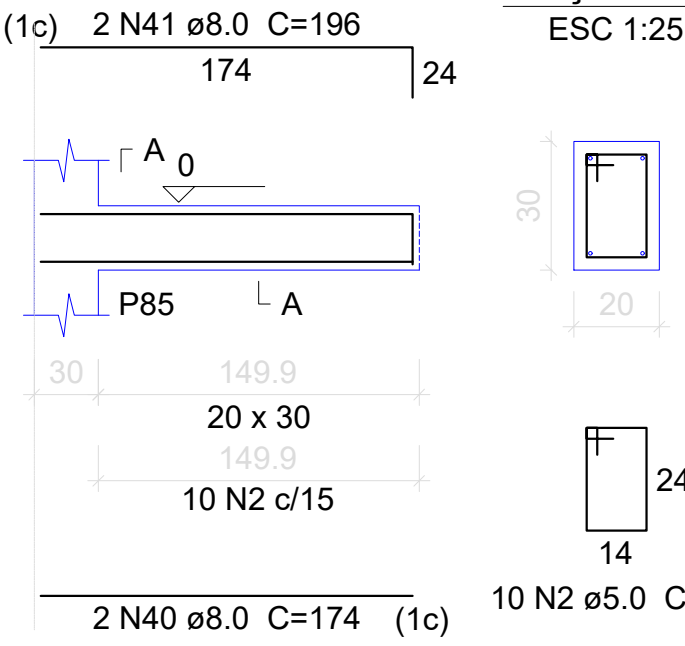
V29  
ESC 1:50



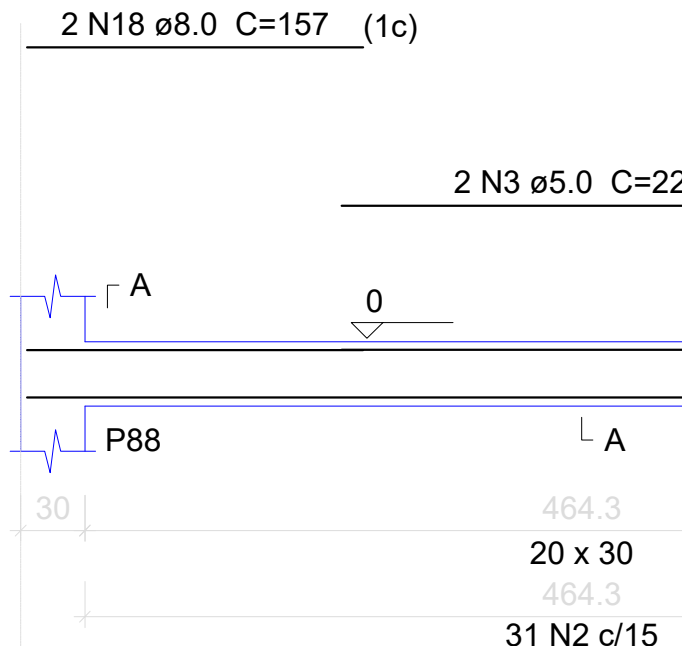
V30  
ESC 1:50



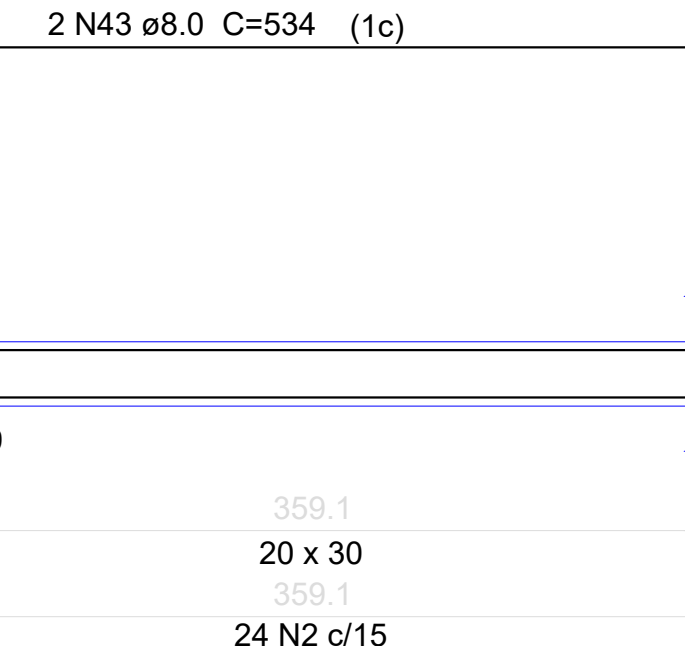
V31  
ESC 1:50



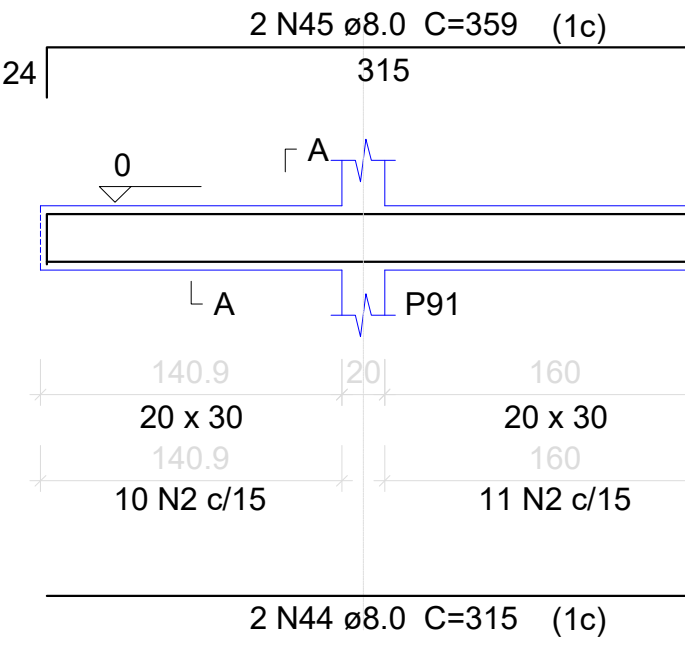
V32  
ESC 1:50



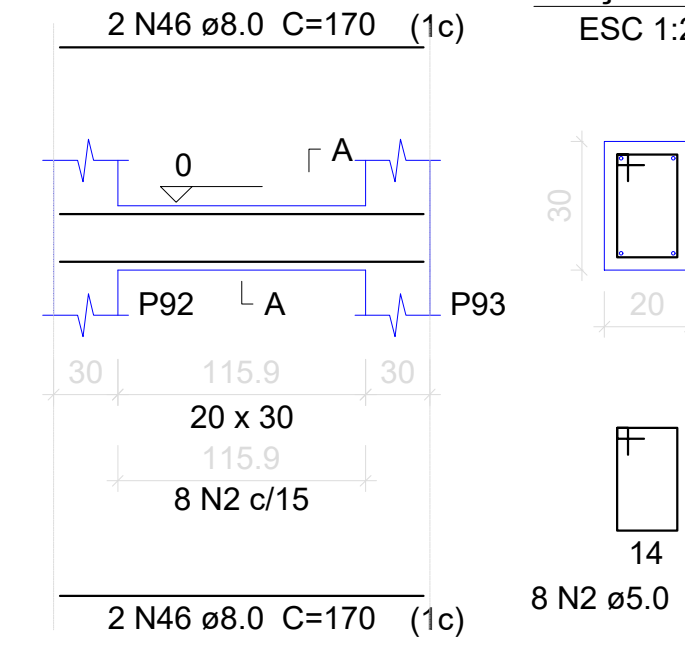
V33  
ESC 1:50



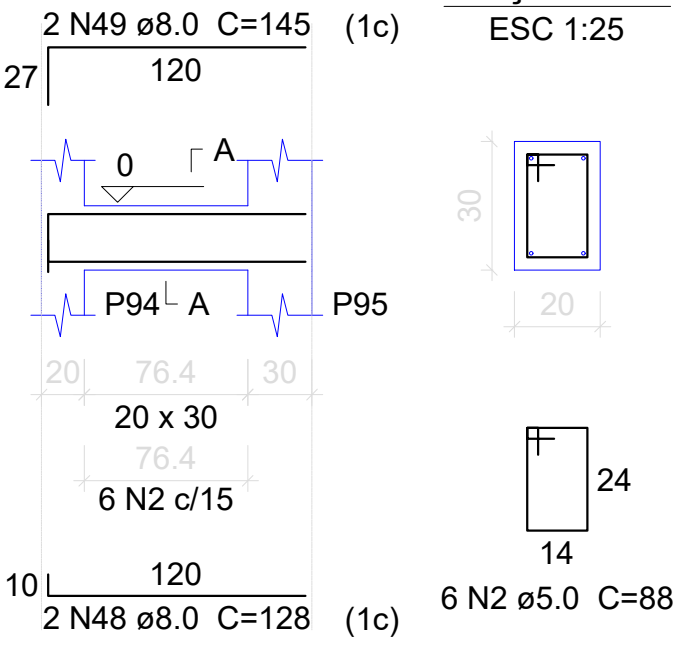
V34  
ESC 1:50



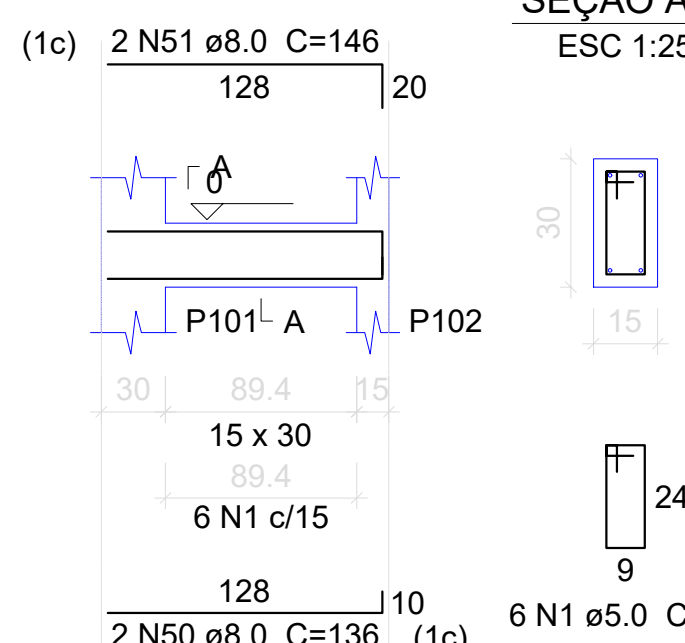
V35  
ESC 1:50



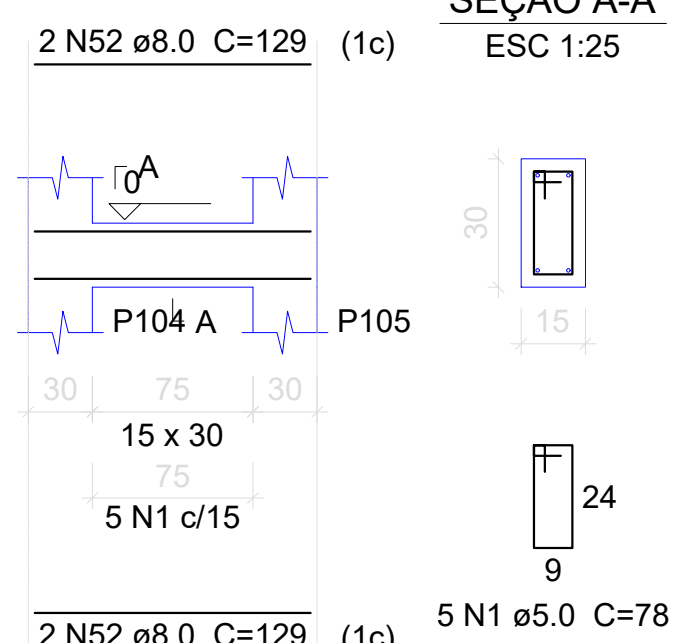
V36  
ESC 1:50



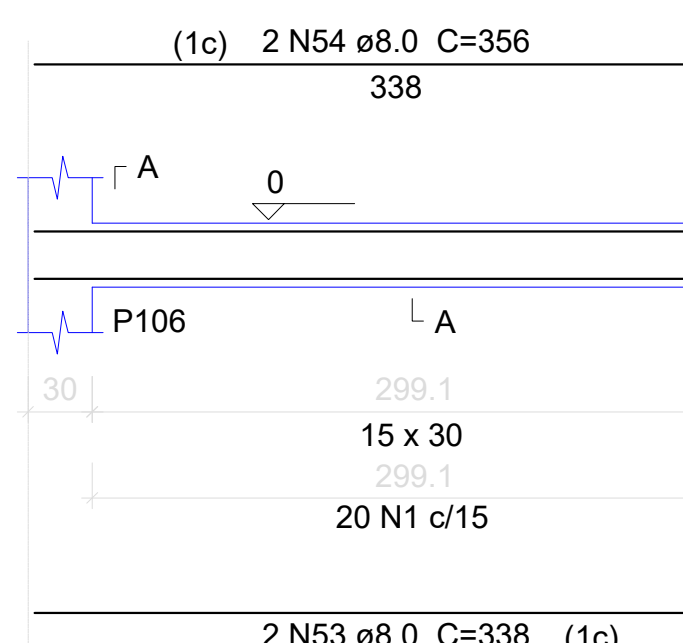
V37  
ESC 1:50



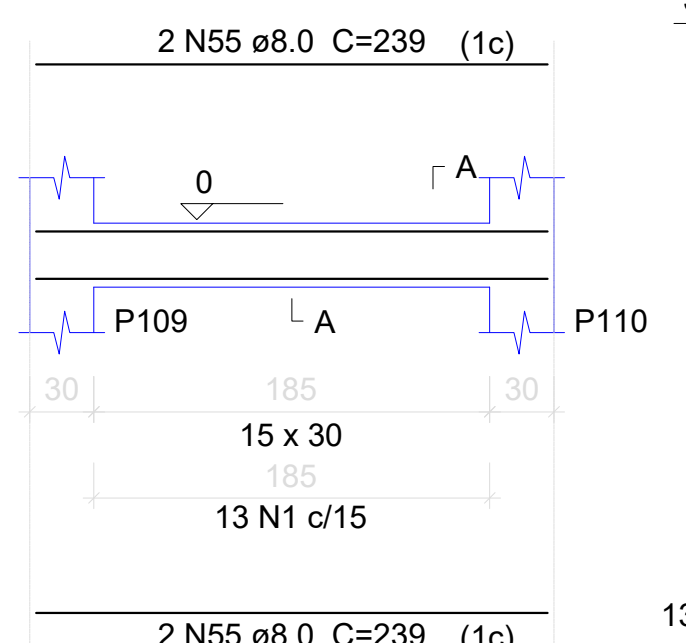
V38  
ESC 1:50



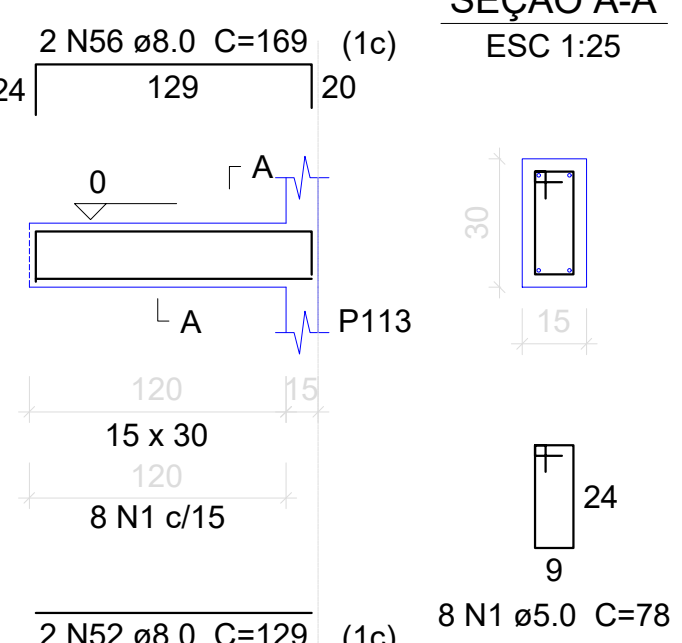
V39  
ESC 1:50



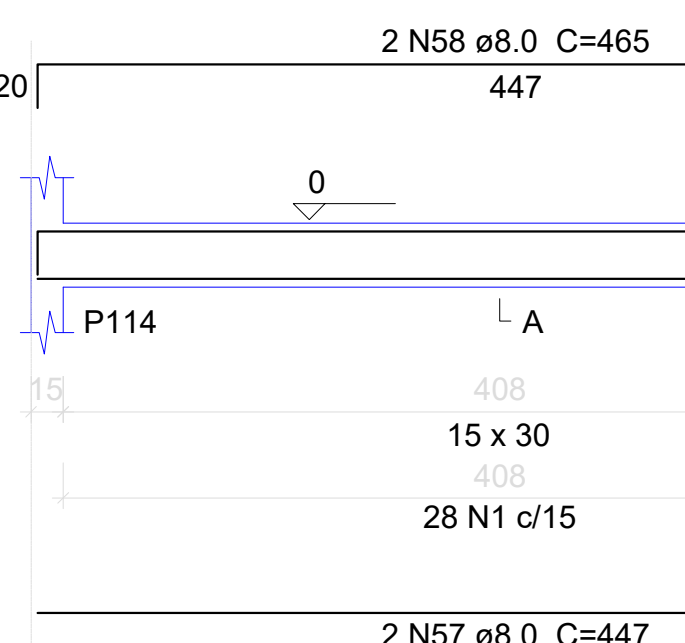
V40  
ESC 1:50



V41  
ESC 1:50



V42  
ESC 1:50



Relação do aço

V1	V2	V3
V4	V5	V6
V7	V8	V9
V10	V11	V12
V13	V14	V15
V16	V17	V18
V19	V20	V21
V22	V23	V24
V25	V26	V27
V28	V29	V30
V31	V32	V33
V34	V35	V36
V37	V38	V39
V40	V41	V42

CA60	N	DIAM	Q	UNIT (cm)	C.TOTAL (cm)
CA60	1	5.0	638	78	49764
CA60	2	5.0	135	88	11880
CA60	3	5.0	2	222	444
CA60	4	8.0	4	1146	4584
CA60	5	8.0	4	280	1120
CA60	6	8.0	4	369	1476
CA60	7	8.0	2	498	996
CA60	8	8.0	2	516	1032
CA60	9	8.0	2	368	736
CA60	10	8.0	2	378	756
CA60	11	8.0	2	194	388
CA60	12	8.0	2	204	408
CA60	13	8.0	2	360	720
CA60	14	8.0	2	396	792
CA60	15	8.0	2	252	504
CA60	16	8.0	2	262	524
CA60	17	8.0	4	557	2228
CA60	18	8.0	4	157	942
CA60	19	8.0	10	350	3500
CA60	20	8.0	6	368	2208
CA60	21	8.0	4	546	2184
CA60	22	8.0	4	182	728
CA60	23	8.0	4	192	768
CA60	24	8.0	6	333	1998
CA60	25	8.0	6	327	2616
CA60	26	8.0	2	150	300
CA60	27	8.0	2	160	320
CA60	28	8.0	2	351	702
CA60	29	8.0	4	515	2060
CA60	30	8.0	4	237	948
CA60	31	8.0	2	95	190
CA60	32	8.0	2	117	234
CA60	33	8.0	2	523	1046
CA60	34	8.0	2	533	1066
CA60	35	8.0	4	139	556
CA60	36	8.0	4	225	900
CA60	37	8.0	4	388	1552
CA60	38	8.0	2	107	214
CA60	39	8.0	2	121	242
CA60	40	8.0	2	174	348
CA60	41	8.0	2	196	392
CA60	42	8.0	2	892	1784
CA60	43	8.0	2	534	1068
CA60	44	8.0	2	315	630
CA60	45	8.0	2	359	718
CA60	46	8.0	4	170	680
CA60	47	8.0	4	128	512
CA60	48	8.0	2	128	256
CA60	49	8.0	2	145	290
CA60	50	8.0	2	136	272
CA60	51	8.0	2	146	292
CA60	52	8.0	6	129	774
CA60	53	8.0	2	338	676
CA60	54	8.0	2	356	712
CA60	55	8.0	4	239	956
CA60	56	8.0	2	169	338
CA60	57	8.0	2	447	894
CA60	58	8.0	2	465	930

Resumo do aço

CAO	DIAM	C.TOTAL (m)	PESO (kg)
CA50	8.0	840.6	213.3
CA60	5.0	620.9	95.7
PESO TOTAL			
CA50		213.3	
CA60		95.7	

Vol. de concreto total (C-25) = 6.46 m³  
Área de forma total = 103.06 m²

ESTADO DE MATO GROSSO  
PREFEITURA MUNICIPAL DE BARRA DO GARÇAS  
Rua Carajás, 532 centro - Barra do Garças MT - CEP 78.600-000

L.F. Pereira Engenharia  
CNPJ 24.686.425/0001-64  
Rua Concordia, nº 767 S. - Bairro: Jardim Primavera,  
CEP 78275-000 - Barra do Garças - MT - (64) 98163-9030

Obra: REFORMA E AMPLIAÇÃO DO PRONTO SOCORRO E HOSPITAL MUNICIPAL MILTON PESSOA MORBEC

Conteúdo: PROJETO ESTRUTURAL - PAV. FUNDAÇÃO VIGAS E L

Local: HOSPITAL MUNICIPAL DE BARRA DO GARÇAS, JARDIM AMAZÔNIA, 1 BARRA DO GARÇAS - MT

Propriedade: Prefeitura Municipal Barra do Garças

Autor do projeto: Responsável Técnico:

ENGENHEIRO CIVIL  
Luiz Fernando Pereira  
CREA: 170.633.6586 RN

ENGENHEIRO CIVIL

Folha: A0 Dimensões: Escala: INDICADAS

Arquivo: CAD Data: Jan/2023 Folha: 06/08